

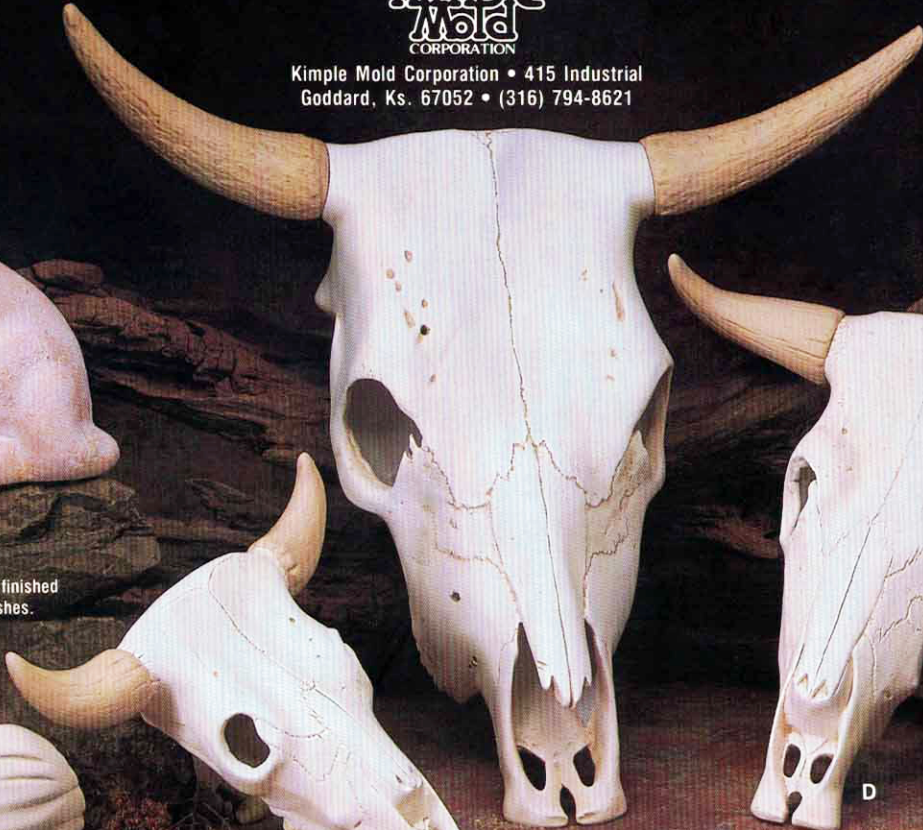


Kimple Mold Corporation • 415 Industrial
Goddard, Ks. 67052 • (316) 794-8621

- A #1680 — Sm. Pillow Vase - 3½" T
- B #1681 — Lg. Pillow Vase - 6½" T
- C #1682 — Lg. Cow Skull } 16½" L
- #1683 — Horns for 1682 }
- D #1684 — Med. Cow Skull } 13" L
- #1685 — Horns for 1684 }
- E #1686 — Sm. Cow Skull - 10" L
- F #1687 — Howling Coyote - 11" T
- G #1688 — Southwest Napkin Base - 6" L
- #1689 — Cactus & Mtn. for 1688 - 5" T
- #1690 — Hombre S&P for 1688 - 2½" T
- H #1691 — Southwest Woman - 9½" T
- I #1692 — Adobe Smoker - 5" L
- J #1693 — Southwest Wedding Vase - 11½" T
- K #1694 — Coyote Blinkie - 6" T



F



C



D



J



H



G



I



K



A

All molds © copyrighted. All pieces finished using Kimple Stains and Kimple Brushes.

RELEASE SHEET #60



KIMPLE MOLD CORPORATION
415 INDUSTRIAL ST.
GODDARD, KS 67052
(316) 794-8621 FAX (316) 794-8226

All colors used are Kimple Stains
All molds are Kimple Molds

COMBINED MATERIALS NEEDED FOR ALL PIECES:

Opaque Stains

#900 White	#934 Just Peachy
#901 Bone	#939 Warm Beige
#903 Smoke	#940 Toffee
#904 Light Grey	#941 Light Terra
#906 Cocoa Brown	#942 Raspberry Light
#907 Caramel	#946 Whisper Blue
#908 Tawny Beige	
#918 Forest Green	<i>Oil Base Antique</i>
#919 Clover Green	#1001 Shimmering Bark
#920 Moss Green	#1003 Shimmering Teak
#921 Pea Pod	
#924 Teal Blue	<i>Water Base Metallic</i>
#927 Aqua	#971 Gold
#931 Medium Yellow	

Miscellaneous
#973 Ant. Solvent
Silica Sand

SMALL PILLOW VASE

Mold Number: #1680

#1. Basecoat top band Aqua, 2nd band Teal Blue, 3rd band Raspberry Light 4th band Light Terra. #2. Mix sand & Teal Blue 2 to 1. Paint on Teal Blue area avoiding cactus & ridge line. 3. Mix sand Light Terra 2 to 1. Paint on Light Terra area again avoiding cactus & ridge line. #4. Paint cactus, ridge lines & 1/4 around top of vase with Metallic Gold. Repeat as necessary for good coverage.

LARGE PILLOW VASE

Mold Number: #1681

#1. Basecoat top section Teal Blue, middle section Tawny Beige, Bottom section Light Terra, horse & Indian Cocoa Brown. #2. Mix sand & Tawny Beige 2 to 1 & apply two coats to Tawny Beige area. #3. Paint ridge lines Metallic Gold.

ALL COW SKULLS

Mold Numbers:

- #1682 Large Skull
- #1684 Med. Skull
- #1686 Small Skull
- #1683 Horns for #1682
- #1685 Horns for #1684

#1. Basecoat skulls White, horns Warm Beige & teeth Bone. #2. Antique with Shimmering Teak. Wipe down with Solvent.

HOWLING COYOTE

Mold Number: #1687

#1. Basecoat with Just Peachy. #2. Antique with White, a small area at a time.

S. W. NAPKIN/S&P SET

Mold Numbers:

- #1688 S.W. Base
- #1689 Cactus & Mountain
- #1890 Hombre S & P

#1. Basecoat A. Mountain-Light Terra B. Cactus-Forest Green; hills with cactus-Light Terra C. Base-Warm Beige D. Hombre shirt & pants-Bone, Hats Caramel, feet Toffee & one poncho Whisper Blue, the other Just Peachy. #2. Antique all with Shimmering Bark. #3. Drybrush mountains Light Terra; highlight with Warm Beige. With Clover Green randomly drybrush over the mountain. #4. Drybrush cactus Forest Green; highlight with Medium Yellow. Drybrush hills Light Terra, then Warm Beige. #5. Drybrush shirt & pants Bone; highlight White. #6. Drybrush hat Caramel, highlight Bone. #7. Drybrush feet Toffee; highlight Warm Beige. Paint sandals Cocoa Brown. #8. Drybrush Whisper Blue poncho with same color. Drybrush Just Peachy poncho with same color. Highlight both with White. #9. Dots on hats are Whisper Blue & Just Peachy. See picture for placement. #10. Drybrush base Warm Beige; highlight White.

SOUTHWEST WOMAN

Mold Number: #1691

#1. Basecoat Tawny Beige. #2. Antique Shimmering Teak. Wipe down but don't use Solvent. Apply Metallic Gold to top three bands on front of dress.

ADOBE SMOKER

Mold Number: #1692

#1. Basecoat A. Base-Tawny Beige B. House Light Grey C. All window areas-Smoke D. Chimney top & all open brick areas-Light Terra E. Door frame, ladder & all posts-Cocoa Brown F. Peppers hanging by door-

Wine. #2. Antique entire piece Shimmering Teak. Don't use Solvent.

SOUTHWEST WEDDING VASES

Mold Number: #1693

#1. Basecoat A. Mission-Light Grey, windows White, doorstep & door frame-Smoke B. Sand-Warm Beige C. Bricks roof area-Light Terra D. Sky-Whisper Blue E. Remaining areas of vase-Tawny Beige. #2. Antique entire piece with Shimmering Bark. Wipe down using Solvent. #3. Drybrush sky Whisper Blue. Mix a little White into brush & highlight. Sponge in clouds with White. #4. Drybrush mission, steps & door frame Light Grey; highlight White. #5. Drybrush sand Warm Beige; highlight White. #6. Paint cross Metallic Gold. #7. Drybrush bricks & roof Light Terra; highlight White. #8. Mix sand & Tawny Beige 2 to 1 and apply two coats to Tawny Beige areas.

COYOTE BLINKIE

Mold Number: #1694

#1. Basecoat A. Mountain-Light Terra B. Cactus-Forest Green C. Moon-Medium Yellow D. Coyote-Smoke E. Grass Moss Green F. Rocks-Warm Beige G. Sm. middle stone by paw & sm. stone under grass-Light Grey. #2. Antique with Shimmering Bark. Wipe down well but don't use Solvent. #3. Drybrush mountain Light Terra, then Warm Beige. Mix a little White into same brush & highlight. Highlight again lightly with Moss Green. #4. Drybrush cactus Forest Green, then Clover Green; highlight with Medium Yellow. #5. Drybrush grass Moss Green, then Pea Pod; highlight White. #6. Drybrush rocks Warm Beige; highlight White. Highlight Light Grey rocks with White. #7. Drybrush moon Medium Yellow, then White; heavier around edges. #8. Drybrush coyote Smoke, then Light Grey. Highlight White; heavier on chest, paw, haunches & tail. Paint nose Black. Mouthline is Scarlet Red. Line inside ear Dusty Rose.