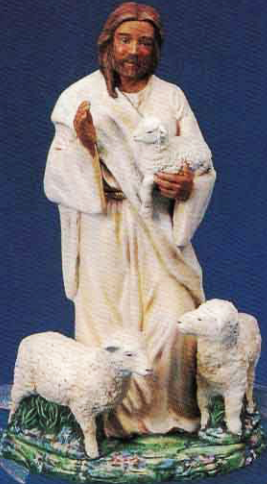


KIMPLE MOLD CORPORATION

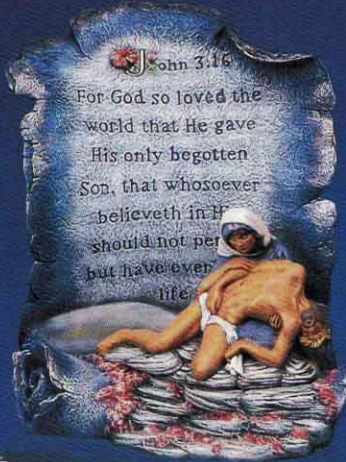
415 Industrial • Goddard, Kansas 67052
316-794-8621



All molds © copyrighted. All pieces finished using Kimple Stains and Kimple Brushes.



I, J, K



M, O, P



A



C, D



B



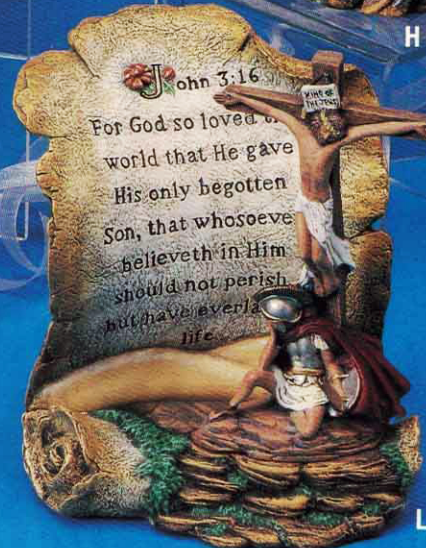
H



N, O, P



E, F, G



L, O, P



Q, R, S

- A. #2325 Praying Hands 8 1/2"t.
- B. #2326 Child's Praying Hands (2) 4"t.
- C. #2327 Garden Backdrop for 2328 9"t.
- D. #2328 Jesus in the Garden 5"t.
- E. #2329 Sm. Door 11 1/2"t.
- F. #2330 Sm. Base for 2329

- G. #2331 Sm. Jesus Knocking 7"t.
- H. #2332 Wood Carved Jesus/Cross 8 1/2"t.
- I. #2333 Jesus the Good Shepherd 9 1/2"t.
- J. #2334 Hands for 2333

- K. #2335 Sheep for 2333
- L. #2336 Crucifix for 2339 8"t.
- M. #2337 Small Pieta 3 1/2"t.

- N. #2338 Jesus/Cross for 2339
- O. #2339 Scroll 8 1/2"t.
- P. #2340 Base for 2339
- Q. #2087 Door Backdrop 15 1/2"t.
- R. #2088 Base for 2087
- S. #2194 Jesus Knocking 9 1/2"t.

COMBINED MATERIALS LIST

Opaque Stains		
#900 White	#936	Raspberry Sherbet
#901 Bone	#940	Toffee
#902 Black	#941	Lt. Terra
#903 Smoke	#945	Eggplant
#904 Lt. Grey	#947	Burnt Brown
#905 Rich Brown	#948	Bamboo Beige
#906 Cocoa Brown	#949	Hunter Green
#907 Caramel	#950	Victorian Grey
#908 Tawny Beige		
#909 Gentle Flesh	Paste Oil Antiquing	
#910 Scarlet Red	#1001	Shimmering Bark
#911 Country Rust	#1003	Shimmering Teak
#912 Wine	#1005	Shimmering Blue
#915 Lt. Pink	#1007	Royalty Red
#917 Pumpkin	#1008	Yellow
#918 Forest Green	#1009	Deep Blue
#919 Clover Green	#1010	Shimmering Black
#920 Moss Green	#1012	Deep Smoke
#921 Pea Pod		
#922 Navy Blue	Metallic	
#923 Intense Blue	#971	Gold (Water Base)
#925 Medium Blue	#972	Silver (Water Base)
#926 Country Blue	#975	Brilliant Gold
#930 Sun Ray		
#931 Medium Yellow	General Products	
#932 Blueberry	#970	Glossy Sealer
	#973	Antiquing Solvent

NOTE: BC means Basecoat; DB means Drybrush; HL means Highlight; WB means Wetbrush which is leaving all little more paint in the brush than when drybrushing.

NOTE: Except where noted all pupils, lash lines & lashes are Black & eye HLs are bone.

PRAYING HANDS #2325 (ADULT) & #2326 (CHILD)

BC Black (if you choose to cut out adult hands in order to light paint inside around fingers Brilliant Gold). DB wood area of both adult & child Rich Brown, Cocoa Brown, Pumpkin & Caramel. DB moss balls & randomly on wood Moss Green. Apply White & Black for charcoal effect (see picture). Apply Glossy Sealer to wood areas with 1/2 water & 1/2 Glossy Sealer. DB Brilliant Gold on wood edges & moss balls. DB adult hands Toffee HL Bamboo Beige. DB child's hands Bamboo Beige HL Gentle Flesh. DB nails Victorian Clay. Paint moons of adult nails with thinned White. Antique both set of hand Shimmering Bark. Blush hands Royalty Red. DB cuffs Bone HL White. DB Gold on cuffs. Apply Glossy Sealer on nails.

JESUS/GARDEN #2327 & 2328

BC all pieces Black.

JESUS: DB flesh area Toffee. Antique Shimmering Bark. Blush Royalty Red. Paint eyes Bone. Paint irises Intense Blue. DB hair areas Rich Brown HL Cocoa Brown then Bone. DB gown Bone. Antique Shimmering Teak HL White & LIGHTLY Gold. Paint around collar & cuffs Gold. Paint belt Brilliant Gold. DB robe Scarlet Red HL Gold.

GARDEN: DB bricks Country Rust HL Lt. Terra

& Caramel (see picture for placement). DB stucco Tawny Beige HL White. DB tree, vine & base Rich Brown then Cocoa Brown HL Toffee. DB tree ONLY Caramel, Pumpkin & Warm Beige. Antique tree ONLY Shimmering Black. Apply thinned Glossy Sealer to tree. Touch up vine with Rich Brown HL Gold. DB boulder & rocks Smoke then Lt. Grey HL White. Randomly DB on Lt. Pink & Caramel (see picture). DB leaf & grass areas Forest Green HL Clover Green then Pea Pod then Sun Ray HL Gold.

SMALL JESUS WITH DOOR & BASE #2329, 2330 & 2331

See instruction on Release Sheet #97

WOOD CARVED JESUS #2332

BC Black. DB wood area Rich Brown, Burnt Brown, Cocoa Brown, Caramel & Pumpkin. DB moss areas & randomly on wood area Moss Green. DB cross Warm Beige HL White & LIGHTLY Pumpkin. DB flesh areas Toffee HL above eyes Country Blue. Antique wood area Shimmering Black. Antique cross & flesh areas Shimmering Bark. Apply Black & White paint to wood areas for charcoal effect. Apply Rich Brown to cross ends (see picture). Blush cheeks, lips, back of hands & neck Royalty Red. Touch up hair areas & flick on eyebrows with Black. Paint eyes Bone & irises Intense Blue. DB hair areas Rich Brown then Cocoa Brown HL White. DB thorn crown Caramel HL Bone. DB gown Eggplant HL Country Rust then HL Gold.

SCROLL & PIETA #2337, 2339 & 2340

BC scroll & base Navy Blue. BC pieta Black. DB flesh areas Toffee. Antique Shimmering Bark. Blush Royalty Red. DB hair areas Rich Brown then Cocoa Brown HL Toffee. Paint eyebrows Rich Brown. Apply Royalty Red to cuts. DB Mary's gown Navy Blue then Medium Blue HL Silver. DB scarf & Jesus's wrap White. DB thorn crown Caramel HL Bone. DB inside of scroll Lt. Grey HL White. DB edges Navy Blue with Medium Blue in brush fading in toward white area with Intense Blue (see picture). Antique scroll Deep Blue. Use Solvent to wipe off white area. If necessary HL White again. DB scroll edges Silver. DB all stones & dunes Smoke HL Lt. Grey & white. Randomly DB on Lt. Pink & Moss Green on dunes & stones. Paint inside of "J" Silver. DB all flowers Raspberry Sherbet. Base flowers are stippled Wine, Lt. Pink & Medium Yellow. Paint stems & leaves on scroll Moss Green.

GOOD SHEPHERD & SHEEP #2333, 2334 & 2335

BC the following: flesh areas, Toffee; gown, robe & sheep, Bone; hair areas, Rich Brown; bases & grass areas, Hunter Green. Antique all pieces Shimmering Bark. Use Solvent on light colored areas. Blush flesh areas Royalty Red. Paint eyes Bone. Paint irises Intense Blue. HL

above eyes Shimmering Blue. Flick eyebrows on with Rich Brown. DB hair areas Cocoa Brown, Burnt Brown & VERY LIGHTLY streak on thinned Caramel. DB gown, robe & sheep Bone HL White. DB around neck of gown & sleeve ends Gold. Paint sheeps eyes & nose slits Black. Apply Deep Smoke antiquing to inside of sheeps ears. Paint gown belt Brilliant Gold. DB base & grass areas the following: Forest Green, Clover Green, Moss Green & Pea Pod. Stipple on the following colors to make flowers; Medium Blue, Dusty Rose, Sweet Violet, Lt. Pink, Medium Yellow & Wine. See picture for placement.

CRUCIFIX #2336

BC Black. DB flesh areas Toffee. Antique flesh areas Shimmering Bark. Blush Royalty Red. DB hair areas Cocoa Brown HL Toffee. DB cross Rich Brown HL Cocoa Brown & Pumpkin. DB sign, Jesus's wrap & soldier's dress & sleeve Bone. Antique sign & wrap Shimmering Teak. Antique soldier's dress & sleeves Yellow. HL White on all. Paint sign letters, hanger & Jesus' eyes Black. DB thorn crown, sign & cross rope Caramel HL Bone. Flick on thorns with White. DB soldier's robe Eggplant & Scarlet Red HL Gold. DB sword sheath & paint sandals Rich Brown HL Gold. DB soldier's shield, helmet & breast plate Silver & Gold. DB helmet tuff Brilliant Gold. Detail armor Brilliant Gold see picture for placement. Dot nails Silver. DB base Rich Brown, Cocoa Brown, Pumpkin & Caramel.

JESUS CARRYING CROSS #2338

BC Black. DB flesh areas Toffee. Antique Shimmering Bark. Blush Royalty Red. Paint eyes Bone. Paint irises Intense Blue. DB hair areas Rich Brown HL Cocoa Brown & Toffee. Flick eyebrows on with Rich Brown. DB thorn crown Caramel HL Bone & Gold. Paint thorns White. DB gown Bone. Antique Shimmering Teak HL White. DB sleeve end & HL gown Gold. DB robe Eggplant then Scarlet Red use same brush HL edges Blueberry. HL robe Gold. DB cross Rich Brown, Cocoa Brown HL Pumpkin & Caramel. Paint sandals Rich Brown HL Gold. DB cross wrap Country Rust HL Bone then HL Gold.

SCROLL FOR CRUCIFIX & JESUS & CROSS #2339 & 2340

BC scroll & base Black. DB scroll Caramel then Bone HEAVIER on middle areas feathering out to darker (see picture). Antique Shimmering Bark on edges working in towards middle. Wipe down except for edges. DB edges Gold. DB sand dunes Caramel HL Tawny Beige & Bone (see picture). Apply Shimmering Bark antiquing to outline dunes. DB stone areas Rich Brown, Cocoa Brown, Pumpkin. DB on Smoke randomly (see picture). DB grass area Forest Green HL Clover Green & Moss Green. Paint inside of "J" Brilliant Gold. If necessary line letter back with Black. DB flowers Wine HL Gold & line on Brilliant Gold. Paint stem & leaves Forest Green & Pea Pod.